



WIRELESS INTERCOM SYSTEM

无线内部通讯系统



# Intechcom WI-8004 / WBP-9001

## Narrow Band Wireless Intercom System



In addition to providing the most comprehensive and secure application capabilities, the series provides an unprecedented narrow band of 25KHz bandwidth. This relatively narrow band has many advantages. First, it enables the wireless transmission system to allow more user channels to use the transmission channel in a relatively narrow transmission band, while the transmission speed and signal-to-noise ratio are unchanged. Thus, the limited wireless band resources are saved. The wireless transmission system can restrain and reduce all kinds of wireless signal harmonic interference. The signal-to-noise ratio of the system is improved. Due to the savings of limited wireless band resources, it is possible to allow more devices and channels to be used at the same time in relatively narrow bands and relatively low frequencies. Increase the number of users and use range, reduce manufacturing costs; In the same transmission condition, the signal processing time is saved and the stability of the system is increased.

The revolutionary WI-8004 / WBP-9001 wireless intercom system adopts the ultra-high frequency spectrum transmission technology, and combines the excellent performance of narrowband technology and other innovative functions. Therefore, it is one of the best and most versatile wireless intercom systems.

The Intechcom wireless intercom system can be run in the frequency range selectable between 470-608 MHz and 614-740 MHz.

Intechcom in wireless intercom system not only can be used as independent wireless system, to meet the needs of field flow position intercom listen to communication demand, make up for the current domestic rare high reliable performance in the wireless intercom system. Moreover, it can be combined with other wired intercom network to form the network matrix of the intercom system combining wireless + wired. As large as possible to meet the activities, work in a fixed position and flow position at the scene of theatrical performances, sports, radio and television operation management personnel, director, producer of art, stage machinery, structure, equipment, television, video, lighting, special control and other professional technical staff of different communication need intercom communications.

Within the wireless intercom system frequency selection and combination of flexibility and versatility, good audio clarity and high reliability at an organic whole, make the Intechcom wireless intercom system in the performing arts to make the best choice of the communication system tools.

The wireless intercom system supports up to four full-duplex wireless beltback for each master station, and the master station is ready for a separate channel, ready for a 2-wire or 4-wire connection.

# WI-8004

## Narrow Band UHF Synthesized Wireless Intercom Base Station



### » FEATURES SPECIFICATIONS

- Base Station LCD Allows the User to Easily Monitor the Beltpack's Status
- Base Stations are Table or Rack Mountable
- Automatically or Manual Finds the Best Channels on Which to Operate
- Compatible with Telex ,Clear-Com, Altair & Other Wired Intercom Types
- Convenient IEC Power Connector on the Base Station
- Full Duplex (Simultaneous Talk & Listen ) Operation
- Talk Button and Volume Control

Color	Black
Height	1.72"(43.7mm)
Depth	14"(355.6mm)
Width	19"(482.6mm)
Weight	7.12 lbs (3.23kg)
Power Requirements	100-240 VAC, 50-60 Hz, IEC receptacle
Storage Temperature	-4°F to 130°F (-20°C to 55°C)
Antenna	1/4 Wave, TNC Male Connector TX and RX
Form Factor Rack Mount	19"
Frequency Band of Operation	470-608 MHz, 614-740 MHz
Frequency Response	300 Hz - 8 KHz
Local Headset Output	40 mW output into 600Ω 1% Distortion
Microphone Input Sensitivity	9 mv
Modulation Type	FM
Radiated Harmonics and Spurious	Exceeds FCC specifications
RF Frequency Range	470-608 MHz, 614-740 MHz
RF Frequency Stability	≤ 2.5PPM
Transmit Power	100mW Max.(High), 10Mw (Normal)
Wireless Technology	UHF
Modulation Limiter Peak-Responding Compressor	



\* The parameters of the above content are for reference only, Subject to change without notice.

# WBP-9001

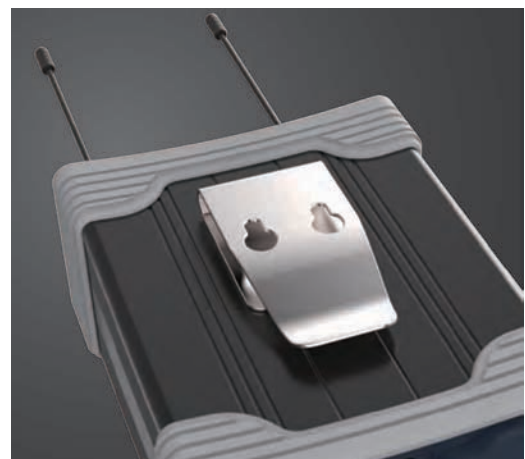
Narrow Band UHF Wireless  
Synthesized Portable Belt Pack



## » FEATURES SPECIFICATIONS

- Channel Select Button
- Low Battery Light
- On/Off & Volume Control
- Receiver RF Indication
- Transmission RF Indication
- Talk Button

Color	Black
Height	1.65"(41.9mm)
Depth	5.05"(128.3mm)
Width	3.75"(95.3mm)
Weight	1.81 lbs(0.82kg)
Power Requirements	2x3.7v Battery (@3000mA)
Operating Time	Average 8 hours
Operating Temperature	-4°F to 130°F (-20°C to 55°C)
Antenna	1/4 Wave (supplied), Screw type, Replaceable TX and RX
Current Draw	140 mA Push-to-Talk, Talk On
Charge Port	Mini-USB
Distortion	<1% at full deviation
FCC ID	B5DM518 (TX 470-608 MHz), B5DM515 (TX 614-746 MHz)
Transmit Power	100mw / 10MW
Frequency Response	300 Hz -8 KHz
Image Rejection	70 dB or better
Local Headset Output	40 mW output into 600W 1% distortion
Microphone Input Sensitivity	7mV
RF Frequency Range	470-608 MHz, 614-740 MHz
RF Frequency Stability	≤ 2.5PPM
RF Sensitivity	<0.7 μV for 12 Db SINAD
Squelch Threshold	20 dB SINAD About 1.0 μV



\* The parameters of the above content are for reference only, Subject to change without notice.



# Intechcom WI-8004 / WBP-9001

## 窄频带无线内通系统



该系列型号的无线内通系统,除了能够提供最全面和最安全的应用功能之外,还提供了一个前所未有的调制带宽仅为25KHz的窄频带。采用这种相对较窄频带,有很多优点。首先它能够在传输速度、信噪比不变的情况下,让该无线传输系统在相对狭窄的传输频带内,允许更多的用户频道使用该传输通道。从而节省了目前有限的无线频带资源;该无线传输系统能够相对较好地抑制,并减少了各类无线发射装置的各种无线信号谐波干扰。相对提高了系统的信噪比;由于节省了目前有限的无线频带资源,就有可能在相对较窄频带、相对较低频率范围内,允许更多的设备和通道同时使用。增加了用户人数和使用范围,降低了制造和使用成本;在同样传输条件下,节省信号处理时间,增加系统工作稳定性。

具有革命性的WI-8004 / WBP-9001无线内通系统采用了超高频频谱传输技术,并结合了窄带技术和其他创新功能等多项优良的性能。因此,它是一款性能最好、用途最广的内通无线系统。

Intechcom无线内通系统可以在470-608 MHz和614-740 MHz之间选择的频段中运行。

Intechcom无线内通系统不仅可以被用作独立的无线通信系统,来满足了现场流动位置需要的对讲收听通讯需求,弥补目前国内少有高可靠性能无线内通系统的空白。而且可以与其他有线内通对讲网络相结合,组成无线+有线相结合的内部通信系统的网阵来工作。以满足大型群众活动中,在固定工作位置和在现场流动位置的文艺演出、体育比赛、广播电视的现场指挥管理人员、导播、艺术节目监制、舞台机械、结构设备、影视音像、灯光照明、特效管控等专业的技术人员不同沟通需要的对讲收听通讯需求。

该无线内通系统集频率跳选和组合的灵活性、丰富的多功能性、较好的音频清晰度和较高的可靠性于一体,使该Intechcom无线内通系统成为现场演艺制作通讯系统工具的最佳选择。

该无线通讯系统每个主机站支持多达4个全双工无线腰包机,主机站已经准备好了单独的通道,随时用于2线制或4线制方式的连接。

# WI-8004

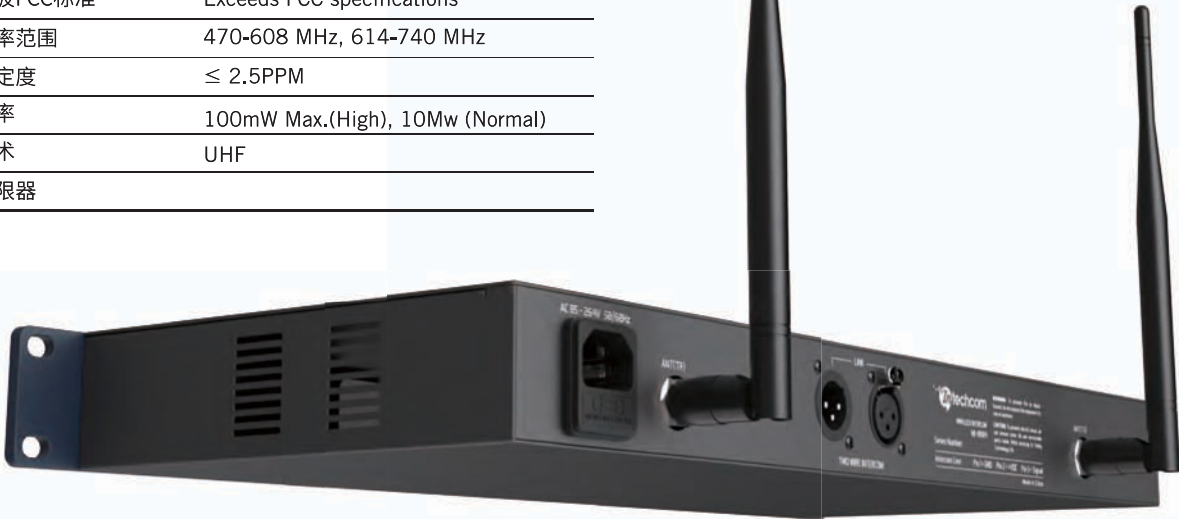
## 无线窄频带超高频内通主机



### » 功能参数

- 主机可以监控无线腰包机的工作状态
- 主机可以安装在机架或安装在桌面上
- 自动或手动寻找最佳的频率通道
- 能够和Telex, Clear-Com, Altair或其它国际主流品牌的两线内通对接
- 标准 IEC 电源连接头
- 全双工功能
- 通话按钮和音量控制

机身的颜色	黑色
机身高度	1.72"(43.7mm)
机身深度	14"(355.6mm)
机身宽度	19"(482.6mm)
重量	7.12 lbs (3.23kg)
供电要求	100-240 VAC, 50-60 Hz, IEC receptacle
环境温度	-4°F to 130°F (-20°C to 55°C)
波长天线	1/4
机架	19"
工作频率	470-608 MHz, 614-740 MHz
频率响应	300 Hz - 8 KHz
耳机转出电平	40 mW output into 600Ω 1% Distortion
话筒输入灵敏度	9 mv
调频类型	FM
辐射谐波FCC标准	Exceeds FCC specifications
高频频率范围	470-608 MHz, 614-740 MHz
射频稳定度	≤ 2.5PPM
发射功率	100mW Max.(High), 10mW (Normal)
无线技术	UHF
调制压限器	



\* 以上内容所涉及的参数和图片仅供参考, 如有变更, 恕不另行通知。

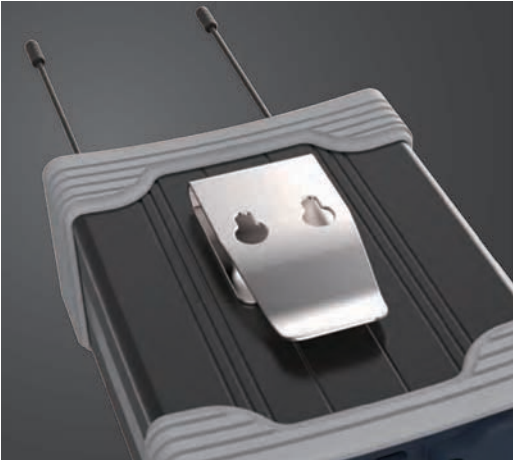
# WBP-9001

## 无线窄频带超高频内通腰包机

### » 功能参数

- 提示电池电量过低
- 开/关和音量控制
- 接收机射频提示
- 发射机射频提示
- 通话按钮

机身的颜色	黑色
机身高度	1.65"(41.9mm)
机身深度	5.05"(128.3mm)
机身宽度	3.75"(95.3mm)
重量	1.81 lbs(0.82kg)
供电要求	2x3.7v Battery (@3000mA)
工作时间	平均工作时间8小时
工作环境温度	-4°F to 130°F (-20°C to 55°C)
波长天线	1/4 Wave (supplied), Screw type, Replaceable TX and RX
工作电流	140 mA Push-to-Talk, Talk On
失真	<1% at full deviation
充电接口	Mini-USB 充电接口
FCC ID	B5DM518 (TX 470-608 MHz), B5DM515 (TX 614-746 MHz)
发射功率	100mw / 10MW
频响	300 Hz -8 KHz
载波抑制	70 dB or better
耳机输出	40 mW output into 600W 1% distortion
话筒输入灵敏度	7mV
工作频率	470-608 MHz, 614-740 MHz
射频频率稳定度	≤ 2.5PPM
射频灵敏度	<0.7 μV for 12 Db SINAD
静音抑制工作点	20 dB SINAD About 1.0 μV



\* 以上内容所涉及的参数和图片仅供参考, 如有变更, 恕不另行通知。

# INTECHCOM 与您不中断联系

Keep communication with your INTECHCOM



® 广州市三域科技有限公司  
广州市三持力科技有限公司  
三一科技有限公司 (香港)  
**TRINITY TECHNOLOGY LTD.**

广东省广州市白云区石井镇夏茅一社新工业区21号

21, 1st Community, Xia Mao Industrial Area, Shi Jing Town, Baiyun District, Guangzhou, Guangdong Province China Postcode. 510425

Tel: 020-86086558 / 020-62326670 Fax: 020-86086827

E-mail: [info@hktrinity.cn](mailto:info@hktrinity.cn) [www.hktrinity.cn](http://www.hktrinity.cn) [www.intechcom.cn](http://www.intechcom.cn)



[www.hktrinity.cn](http://www.hktrinity.cn)



[www.intechcom.cn](http://www.intechcom.cn)